



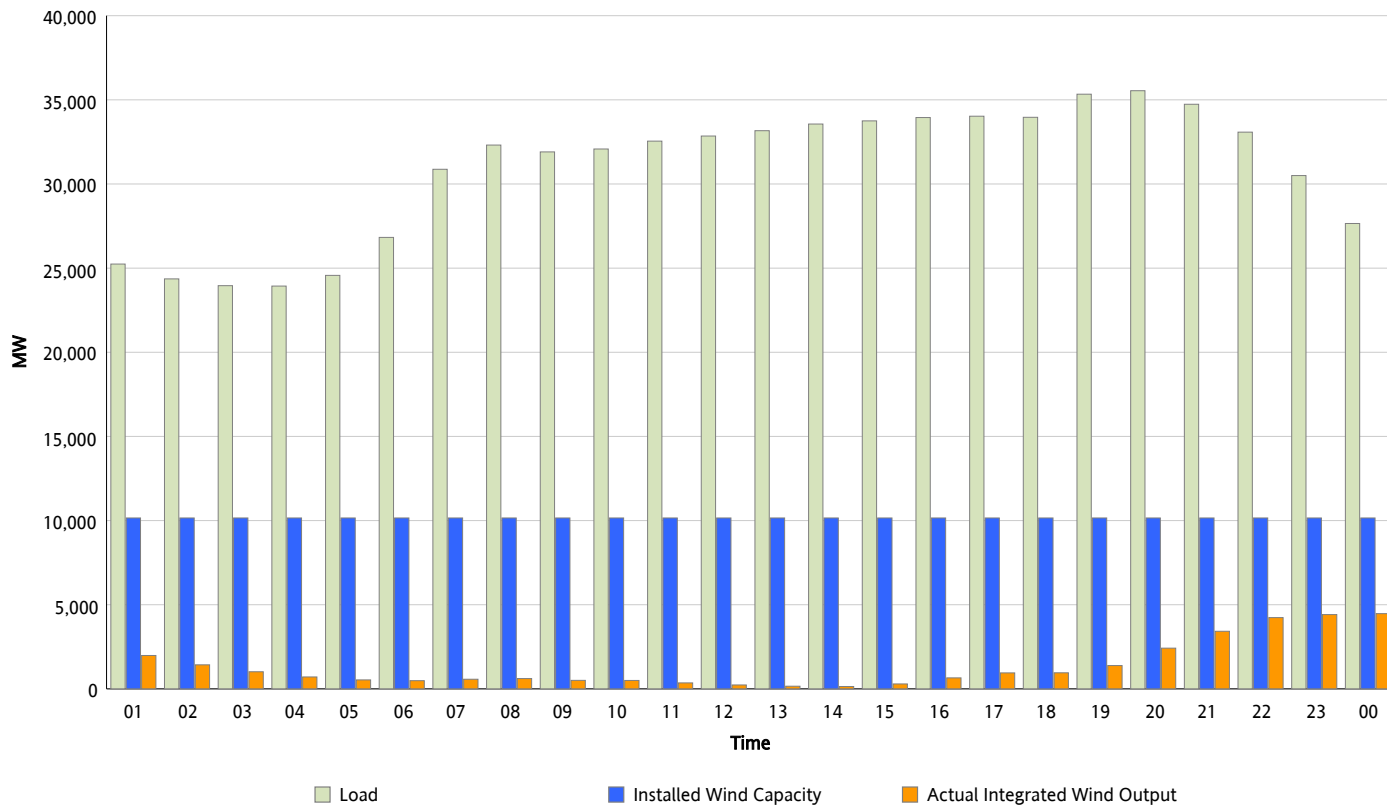
## ERCOT Grid Operations

### Wind Integration Report : 02/05/2013

Peak Load	35,542 MW
Load Peak Hour (HE)	20
Wind Over Peak	2,419 MW
Wind Record 01/29/13	8,667 MW
Max Wind Value*	4,653 MW
Wind Peak Time	23:16
Wind Integration %	16.49 %

#### Hourly Average Actual Load vs. Actual Wind Output

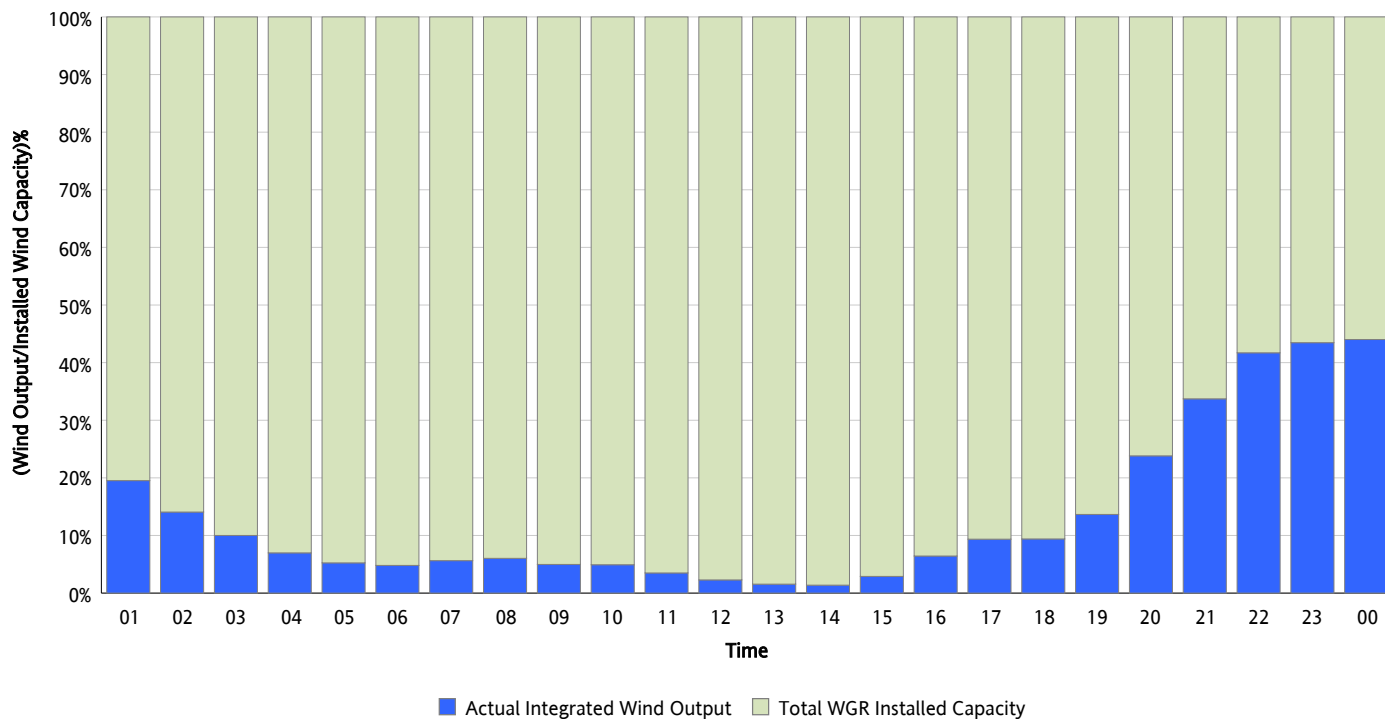
02/05/2013



\* Wind Record and Wind Max represent instantaneous values and the rest of the values are integrated over the hour

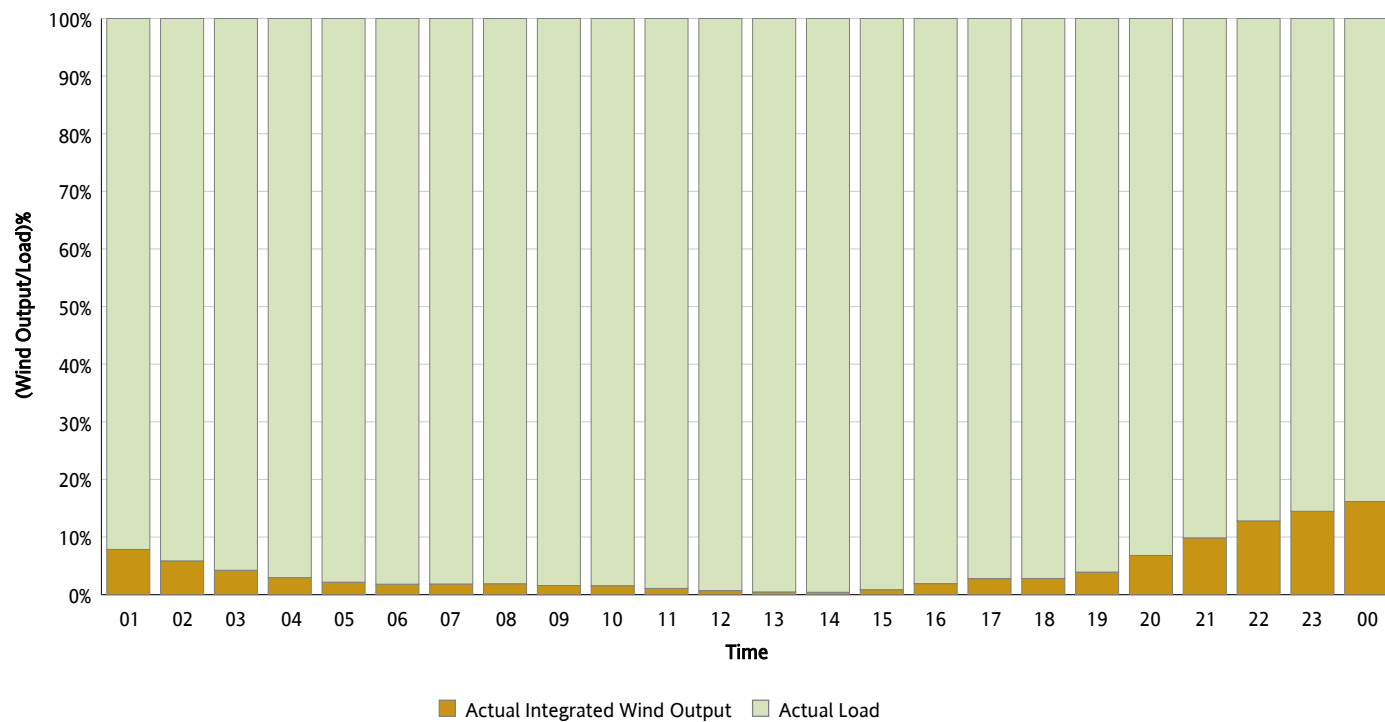
## Actual Wind Output as a Percentage of the Total Installed Wind Capacity

02/05/2013



## Actual Wind Output as a Percentage of the ERCOT Load

02/05/2013



## ERCOT Load vs. Actual Wind Output

01/29/2013 - 02/05/2013

